

The Courtyard aims to offer an outstanding educational and social provision that will equip our students with the skills and experiences needed to discover and live out their potential.



St Mary Magdalene Academy
The Courtyard

The Courtyard Fortnightly Newsletter—Friday 28th January 2022

Quality learning at the Courtyard

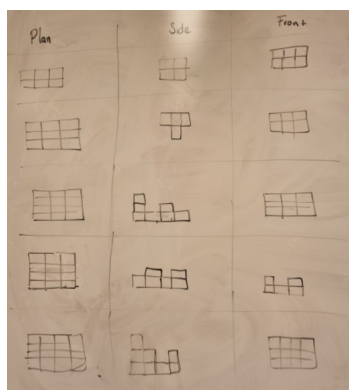
With a determined endeavour to not let Covid impact on the Courtyard provision any more, this term has seen an increase in our focus to ensure quality first teaching and learning at the Courtyard. Leaders have spent more time in lessons, observing excellent teaching and fantastic engagement from pupils.

Staff have been working tirelessly to further develop their teaching craft, ensuring that subject topics have been interesting and motivating to all pupils.

Lessons have been practical and outcome focused. Pupils have been clear on the learning expectations and have been motivated to achieve.

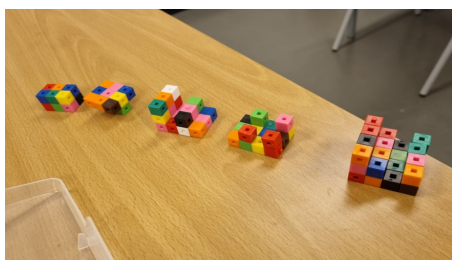
Teaching is personalised to individual pupils to ensure that they are all given the correct level of support to ensure progress whilst also developing independence.

I have never been prouder of our school than I have been this week. Pupils are staff are buoyant, positive and working together to achieve success.



Maths:

Plans and complex elevations



PE: Importance of communication and listening in team sports



Independence: Healthy eating & smoothies

The Courtyard aims to offer an outstanding educational and social provision that will equip our students with the skills and experiences needed to discover and live out their potential.



St Mary Magdalene Academy
The Courtyard

The Courtyard Fortnightly Newsletter—Friday 28th January 2022

How does Priestly show that Mr Birling is unwilling to accept responsibility for what he may have done to Eva Smith?

Priestly shows that Mr Birling is not taking accountability for what he has done because he tries to distract the inspector from the subject matter, by angrily saying "Why the devil do you want to go upsetting the child like that." Despite the fact that Sheila is a fully grown adult, he refers to Sheila as a "child" possibly to villainize the inspector as much as possible.

Mr Birling also abruptly tells the inspector that there is nothing else to tell, and begins stating that he "considers this uncalled for and officious." This could indicate that he is starting to panic because he knows exactly what happened to Eva Smith and is attempting to avoid telling the inspector any further information out of his worries that his reputation might shatter after the word goes out.

By using the word "officious" Mr Birling is insulting the inspector. Normally when people know that they are guilty they often attempt to deflect the blame at the accuser (in this case the accuser is the inspector) to try and make the accuser explain themselves. The inspector has explained himself in previous quotes, yet Mr Birling is still pressuring him to explain himself again.

English:

Outstanding inference of text in GCSE English Literature

HOW DOES PRIESTLEY USE THE CHARACTER OF THE INSPECTOR TO SUGGEST WAYS SOCIETY CAN BE IMPROVED ?

Priestley uses the Inspector to engage questions and verbally produce critical thinking within the Birling family in order to arrive at the conclusion of responsibility.

"But each of you helped to kill her. Remember that. Never forget it.", The inspector projects his thoughts onto the Birlings with short, quick paced sentences which emphasize his authority. One can interpret this as him playing God, condemning them to guilt. Specifically with a hollow name like Goole, similar to Ghoul.

He also mentions that they had 'helped' to kill her. There's a distant emotive irony in his way of speaking, they didn't help her, but instead unknowingly and or unintentionally aided her in her journey of death and misery.

The emotive language of the word 'helped' adds a guilt trip to the Birlings. Because even if they hadn't done it intentionally, as a family, they carry a moral stain of blood on their hands. As if they were all collective bowling pins and there were many last straws leading to her demise.

HOW DOES PRIESTLEY USE THE CHARACTER OF THE INSPECTOR TO SUGGEST WAYS SOCIETY CAN BE IMPROVED ?

Priestley utilizes the inspector's character to suggest methods in which the middle and upper classes can improve their relationship with the poor by truly helping them rather than exploiting them for financial gain. Priestley also uses the inspector as a metaphor to emphasize the importance of treating everyone equally, regardless of their financial difficulties. The Inspector demonstrates throughout the play that he was not scared by Mr Birling, implying that being an upper class citizen really doesn't mean anything, what it truly means is that you're just like the rest of the people.

The Inspector further says "it's better to ask for the earth than to take it" which links to Mr. Birling being self-centered, greedy, and exploiting the underprivileged. Furthermore, The Inspector implies that taking goods without permission is socially irresponsible. Eric demonstrates that he is remorseful for what he has done by saying "You lot may be letting yourselves out nicely, but I can't." This expresses Eric's regret for what he's done and his inability to let it go because a girl took her own life. This demonstrates that Eric is concerned about the poor and is unconcerned about one's social status.

The Courtyard aims to offer an outstanding educational and social provision that will equip our students with the skills and experiences needed to discover and live out their potential.

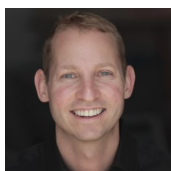


St Mary Magdalene Academy
The Courtyard

6th Form Update



SIXTH FORM MASTERCLASS WITH SALESFORCE



Micah shared with students his career journey. Students found very interested to hear how you can sell yourself in an interview by talking about the skills that you have thanks to hobbies/ extra-curricular activities.

Year 13 Mock Interviews



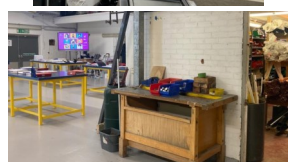
Some of our year 13 students have the exciting opportunity to experience a professional job interview as part of their Work Skills Btec. In collaboration with charity 'my AFK', 5 students will be given the opportunity to be interviewed by volunteers from legal firm Clifford Chance (based in Canary Wharf) and receive some feedback on their interviewing skills.

Students have been asked to prepare a CV and job description based on their future career aspirations. Over the next few weeks they will be able to prepare for their interview which will take place the week before and after half term.

Visit to City & Islington (Finsbury Park) 18th Jan



Visit to CONEL 25th Jan



Social evening for the Sixth formers on Thursday 10th February

@ Passyunk Avenue (Baseball & American Food)



Visits to colleges

The Sixth form team is organizing visits to colleges. These visits will be very enjoyable and enriching for them as students will have the opportunity to ask questions and take pictures. We encourage all Sixth formers to attend unless your child is leaving and has only one preferred choice/ has a secured place already. These visits will help leavers to decide which college will be the right fit for them. We also encourage parents to come along, especially if your child is a leaver. Your child will bring a letter home with the third visit to college next Tuesday, CAPEL MANOR.

Confirmed visits:

CAPEL MANOR- Tues 1st Feb

BSIX- Tues 8th Feb



The Courtyard aims to offer an outstanding educational and social provision that will equip our students with the skills and experiences needed to discover and live out their potential.



St Mary Magdalene Academy
The Courtyard

With Safer Internet Day fast approaching, here is some info.....

Save the Date.....

Annah Sigola has invited PC Dawn Wood from the Met-Police to a zoom call with our students on Tuesday 8th February 2022 during keyworker time. The purpose of PC Dawn Wood's zoom call is to run a workshop that will highlight the importance of internet safety as well as raising some awareness tips that may support pupils when tackling harassment on the internet.

We have created a helpful [parent guide](#) on our school website which enables parents to talk to their children about online sexual harassment. This is a really difficult topic, and one that can be hard to navigate as a parent. The overriding message from this guide is to talk early and talk often; to create a culture at home and school before the crisis arrives.

This guide for parents is very informative, helpful and covers the following:



Leaflets and webcam covers will be handed out on this day for learners to take home and share with their parents.

Please note: Parents will also have an Internet Safety workshop (via zoom) which will be held on Wednesday 9th February 2022 from 4:30 to 5.00pm. A link to this zoom call will be provided to parents who are interested nearer the date.

WHEN?

Safer Internet Day takes place every February



Online Safety messages for parents

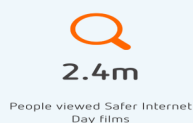
Have you given your child any tech during the festive period? We know that lots of families give children devices at this time of year. Whether it's a laptop, phone, tablet, games console or another device that connects to the online world, there is a lot you can do to make sure it's set up safely for your child.

We know this time of year can be busy, please [click here](#) for a checklist to help you set up your child's new device.

The theme of Safer Internet Day 2022 will be
"All fun and games? Exploring respect and relationships online"

Register your support today to help build from the success of last year!

The impact of Safer Internet Day 2021:



Safer Internet Day 2022
Tuesday 8 February
Coordinated by the UK Safer Internet Centre

The Courtyard aims to offer an outstanding educational and social provision that will equip our students with the skills and experiences needed to discover and live out their potential.



St Mary Magdalene Academy
The Courtyard

Notice from Head of Pastoral —Alison Rush



Most merits this week	Bronze – 200 points	Silver – 350 points	Gold – 500 points	Platinum – 700 points
JOHNO 49 FRED 39 AZARIAH 38 JAMES 38 NEVAN 38 AYMENE 36	DILLON 452 CHARLIE 444 IAN 440 KODEE 426 AZARIAH 413 KEIRA 410 JOHN 408 TYRESE QB 397 CALLUM 387 DEV 381 HENRY 377 RUBY 377 NAOMI 371 ELSHARIEF 362 DANIEL 351 LULA 346 SHANE 341 JACK N 314 BLAISE 309 DAVID 299 LIZ 293 JAMES 293 YIGIT 291 AMY 287 KATIE 276 MAX 263 KATIE 264 JAMES 255	AYMENE 559 DORIAN 548 ANGELINA 544 XAUNDRE 529 PROM 527 WILLIAM 523 JACK B 520 FRED 515		

Keyworker with the most Dojos: MISS NAHAR

The Courtyard aims to offer an outstanding educational and social provision that will equip our students with the skills and experiences needed to discover and live out their potential.



St Mary Magdalene Academy
The Courtyard

Courtyard Celebrations



28.01.22 KS4 Star of the week

John for his positive attitude and engagement during WE and saying "thank you for teaching us" to the employer at the end of the session.

Naomi for passing her Entry 3 ICT exams.

Ian for supporting others on how to do a sum formula in Excel Spreadsheet.

William for pushing the boundaries of his present knowledge.

Dillon for exceptional work in Science.

28.01.22 KS5 Star of the week

Dorian for pushing himself to create challenging analytical paragraphs in English.

Dorian for taking time to work on the small details of his artwork.

Dillon for great effort in maths.

Jack N for excellent work on division .

David for good support with help the independent class in PE.

Jack N for hard work and persistence in English.

28.01.22 KS4 Star of the week

Elsharief for remembering how to format cells to currency when using Excel Spreadsheets.

Tyrese QB for being incredible articulate both in his reference to literature "The candle represents a pathway to hope", and also in his ability to verbalise and sustain his point of view with maturity.

Liz for catching up on her Workskills work after school

Max being able to deliver clear and direct instructions in the circuit training class

28.01.22 KS5 Star of the week

Tyrese QB for his great focus on Index Laws in maths.

Dennis for setting a mature example for his peers at the spring awakening trip.

Tyrese QB for his positive attitude and engagement during WE and saying "thank you for teaching us" to the employer at the end of the session.

Azariah for remembering how to format cells to currency when using Excel Spreadsheets.

Aaron for being able to deliver clear and direct instructions in the circuit training class

SPRING TERM FORTNIGHTLY SUBJECT FOCUS

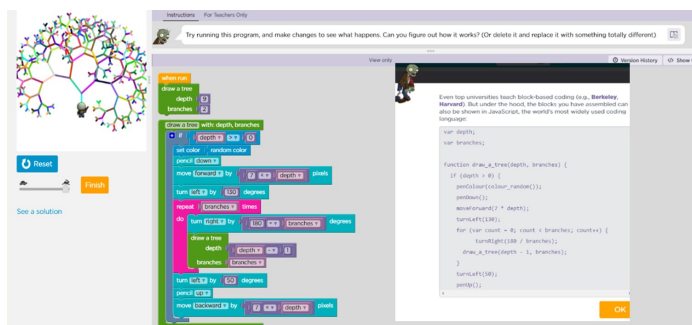
Week Beginning	Mon 31st Jan	Mon 7th Feb
Maths Entry Level	Fractions and 3D Shapes finishing off.	Fractions of an amount
Maths FSL1	Fractions - writing, ordering, adding/subtracting, fractions of amounts	Fractions, decimal and percentage conversions and percentage of amounts
Maths GCSE	Index Laws and Standard Form	Quadratic Equations
English Entry Level	Speaking and Listening exercises	Reading Charlie and the Chocolate Factory/Stone Cold
English FSL1	Speaking and Listening exercises	Reading Stone Cold by Robert Swindells
English GCSE Lang	Tea and Read BOYS DON'T CRY + exam style questions	Adam's Story - Boys Don't Cry
English GCSE Lit	<i>Tea and Read - A Christmas Carol</i> + 'unseen' exam question	The Road to Redemption? A Christmas Carol
ICT Informatics	complete 2 coding tasks / Informatics Course- E-Safety project 1	x 2 coding tasks
ICT FSL1	Create a suitable chart for your business empire spreadsheet & label	Reply to teacher comments in full sentences
ICT FSL2	Create a suitable chart for your business empire spreadsheet & label	Reply to teacher comments in full sentences
ICT ECDL L3 PPT	Level 3 PowerPoint Presentation Spring Assessment	Feedback to Level 3 PowerPoint Presentation Spring Assessment
Science BTEC Principles	Treatments and cures	Vaccinations and Antibiotics
Science BTEC Applications	Blood Groups	Blood Groups
Home Cooking	Practical assessments and write up.	Learning to bake chocolate chip cookies and evaluating
Hospitality	Unit 3 continued: Food safety Hazards	Learning to bake Chocolate chip cookies and evaluating
PSD	FGM	How and where to get help if you are frightened or worried about your safety or the safety of others.
WorkSkills BTEC	Adhering to a dress code, in line with workplace requirements	Personal hygiene and cleanliness
P.E.	Power endurance	Anaerobic endurance
Creative Expression	Reading facial expressions in drama.	Scene work on 'Lord of the Flies'.
World Studies	The Austro-Hungarian Empire - Looking at Ethnicity and Culture	The Austro-Hungarian Empire - Looking at Ethnicity and Culture (Continuation)
Art	To understand and apply different drawing techniques	To understand and apply different drawing techniques
RSE 6th Form	What is Love? Exploring examples	Defining a healthy romantic relationships
RSE 6th Form-Independence	what is a healthy relationship?	What makes a good friendship
Independence group 1	Understanding bank accounts.	Building and sustaining friendships.
Independence group 2	To gain a good knowledge of appropriate social distancing. To be able to make a sandwich and	To be able to identify the difference between 'use by' and 'best before' dates on food products.

The Courtyard aims to offer an outstanding educational and social provision that will equip our students with the skills and experiences needed to discover and live out their potential



St Mary Magdalene Academy
The Courtyard

The Courtyard Fortnightly Newsletter—Friday 28th January 2022



ICT: Coding



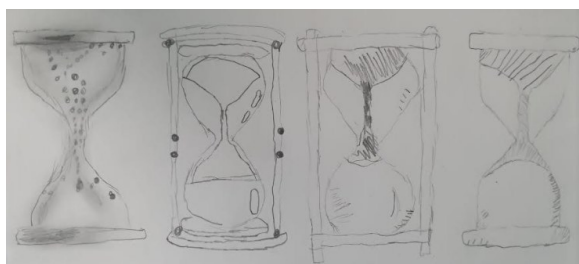
Science:

Understanding Ecosystems

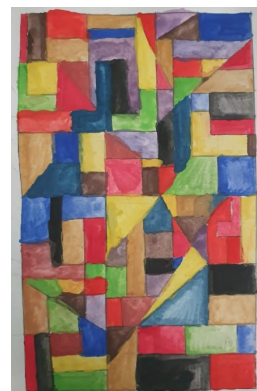
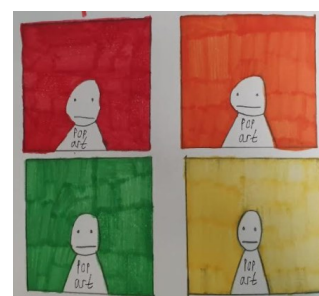


PE:

Circuit Training



**Creative
Expression:
Almeida
Theatre &
Spring
Awakening**



Art:

**Revolutionising the
PopArt movement**

The Courtyard aims to offer an outstanding educational and social provision that will equip our students with the skills and experiences needed to discover and live out their potential



St Mary Magdalene Academy
The Courtyard

A snapshot of the last two weeks

