

The Courtyard aims to offer an outstanding educational and social provision that will equip our students with the skills and experiences needed to discover and live out their potential.



St Mary Magdalene Academy
The Courtyard

The Courtyard Fortnightly Newsletter - Friday 30th September 2022

WELCOME BACK

A new phase for the Courtyard

For those families who have been part of the Courtyard community for a number of years, you will be aware that the school has been as an evolving journey for as long as we opened our doors to students in September 2013. This academic year is no different.

We have increased our student number to 54 students and plan to continue to increase the number of young people we educate over the next few years to a maximum of 72 by Sept 2025. In order to meet this increased need, we have expanded our educational site to incorporate seven additional classrooms and two outside spaces at St David's church.

This growth has allowed us to expand our curriculum offer, with the inclusion of French, EPQ and the pre-supported internship programme.

Our staff number has grown, adding more expertise to our team.

Life is exciting at the Courtyard but it is vitally important that we do not lose sight of the key fundamentals that make the Courtyard such a fantastic provision for young people to attend.

ATTENDANCE

It is vitally important that students attend school every day. The only way that the school can have it's desired impact is if students are present and active in their learning.

Mrs Rush and the Pastoral Team are active in supporting students to attend school and are in regular communication with families where attendance has been noted as a concern.

Telephone calls and meetings will be set up in the next few weeks with families to discuss attendance concerns and additional interventions that the school can offer to support your child to attend every day.

The Courtyard aims to offer an outstanding educational and social provision that will equip our students with the skills and experiences needed to discover and live out their potential.



St Mary Magdalene Academy
The Courtyard

The Courtyard Fortnightly Newsletter - Friday 30th September 2022

ST DAVIDS

As mentioned, we are delighted to have expanded our educational provision to include new teaching spaces at St David's. The site has experienced significant redecoration works over the Summer and has become a warm and inviting space for students and staff where positive learning and process is taking place.

On 1st November from 2:30pm—3:15pm, we will be hosting an Open Afternoon for parents to visit the space and become more familiar with the new premises. Further information will follow in the next few weeks but we would be delighted if you could pop in and provide us with your feedback.

Important Dates for your Diary

7.10.22: Whole School Educational Visit—Science Museum—iMax experience

11.10.22: Whole School Educational Visit—V&A Museum—Fashion Conscience workshops

13.10.22: RSE Specialism Day

17.10.22 - 28.10.22: HALF TERM

1.11.22: 2:30pm—Parent visits to St David's site

10.11.22: 1st Careers Event—colleges

1.12.22: 2nd Careers Event—Supported Internships

6.12.22: Parent meetings student progress—Virtual Learning Day

8.12.22: RSE Specialism Day

14.12.22: Courtyard Christmas festivities—2:30pm onwards

16.12.22: Last day of Autumn term—12:30pm finish

The Courtyard aims to offer an outstanding educational and social provision that will equip our students with the skills and experiences needed to discover and live out their potential.



St Mary Magdalene Academy
The Courtyard

SIXTH FORM UPDATE

Welcome back to the new academic year. We have had such a busy September welcoming back all of our students and those who have just joined us.

Now that we have all settled in the school year, we would like to share some of the super things we have been arranging for our sixth formers. Some of our students have started work experience and are already picking up on some exciting skills.

The start of Sixth Form is the ideal time to get into some good study habits, as this will help our students stand in good stead for the future. Our Head of Careers (Mrs Vidal) and our Head of Sixth Form (Mr Aitken) have put together two very exciting events. Please see details as follows:



1ST CAREERS EVENT: COLLEGES

THURSDAY 10TH NOVEMBER

11:30AM - 12:30PM - TOURETTES & I FILM SCREENING
AUTISTIC MULTI-AWARD WINNING FILMMAKER WITH TOURETTE SYNDROM, JACK O'SULLIVAN WILL BE TALKING ABOUT HIS AWARENESS SHORT FILM ABOUT HIS EXPERIENCE WITH TOURETTES AND WITH GUEST MEMBERS FROM MY CAST AND CREW!

12:30PM - 1:15PM - LUNCH

1:15PM - 2.45PM - PUPILS AND PARENTS IN SCHOOL.
COLLEGES PRESENTATIONS IN DIFFERENT ROOMS. PUPILS ARE DIVIDED INTO DIFFERENT GROUPS AND ROTATE AROUND THE PRESENTATIONS.

2.45-3.15PM PUPILS AND PARENTS WILL HAVE THE OPPORTUNIT
DISCUSS COURSES 1:1













2ND CAREERS EVENT: APPRENTICESHIPS, SUPPORTED INTERNSHIPS AND TRAINEESHIPS

THURSDAY 1ST DECEMBER

11:30AM - 12:30PM - PUPILS ONLY. AUTISTIC GUEST SPEAKERS IN
DIFFERENT ROOMS. PUPILS ARE DIVIDED INTO DIFFERENT GROUPS AND
ROTATE AROUND THE GUEST SPEAKERS

12:30PM - 1:15PM - LUNCH

1:15PM - 2.45PM - PUPILS AND PARENTS IN SCHOOL.
APPRENTICESHIP/ TRAINEESHIPS/ SUPPORTED INTERNSHIPS
PRESENTATIONS IN DIFFERENT ROOMS. PUPILS ARE DIVIDED INTO
DIFFERENT GROUPS AND ROTATE AROUND THE PRESENTATIONS.

2.45-3.15PM PUPILS AND PARENTS WILL HAVE THE OPPORTUNIT
DISCUSS COURSES 1:1













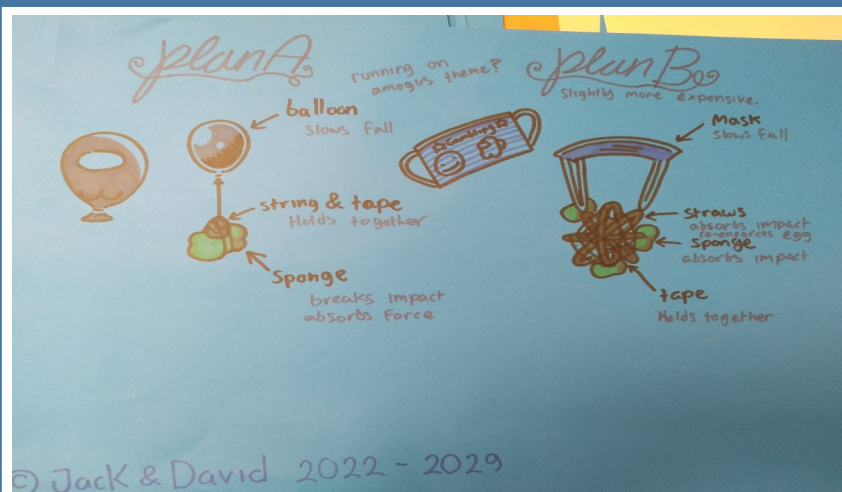
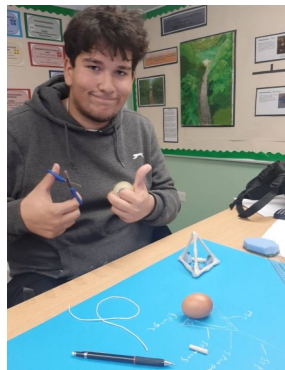
The Courtyard aims to offer an outstanding educational and social provision that will equip our students with the skills and experiences needed to discover and live out their potential.



St Mary Magdalene Academy
The Courtyard

STEM DAY

On Thursday 22nd September, all students took part in a STEM Day (Science, Technology, Engineering and Maths). Students worked in teams to complete an "egg drop challenge" - creating a vehicle that will protect an egg when it is dropped from different heights. They researched how rockets land on Mars before creating blueprints and using a budget to choose their materials from a school shop. Finally, they built, tested and evaluated their vehicles. One student commented that, "the best thing about the day was that all the students were gathered together, smiles on their faces, counting out loud for the balloons to fall down and see if the experiment worked."



The Courtyard aims to offer an outstanding educational and social provision that will equip our students with the skills and experiences needed to discover and live out their potential.



St Mary Magdalene Academy
The Courtyard

RSE Specialism Days

As you may already be aware, Relationships and Sex Education (RSE), along with Health Education have formed as part of the National Curriculum since September 2020.

As part of our schools wider RSE programme, your child will soon receive lessons on relationships, sexual health and personal safety. The purpose of the upcoming curriculum is to provide knowledge and understanding of safe and healthy relationships based on respect. This will encourage the development of safe and healthy relationships throughout life. The subject has been designed to help children from all backgrounds build positive and safe relationships and to thrive.

In order to incorporate this curriculum with our teaching we have planned six RSE days for the academic year 2022-2023. The aim is to address the misconceptions and teaching students what they need to know so they can make informed decisions for themselves and be less vulnerable in society. Through the range of topics and activities students will be able to compare and contrast traditional views and opinions with liberal and alternative perspectives.

Dates and topics are as follows:

The Courtyard has planned six RSE days for the academic year 2022-2023 with the aim of addressing misconceptions and teaching students what they need to know so they can make informed decisions for themselves and be less vulnerable in society. Through the range of topics and activities students will be able to compare and contrast traditional views and opinions with liberal and alternative perspectives. Dates and

Thursday 13th October 2022

Families and Relationships - Introducing the concept of love, marriage, and partnership.

Thursday 8th December 2022

LGBTQ School Talks

Thursday 9th February 2023

Intimate and Sexual Relationships

Thursday 23rd March 2023

Sexual Health

Thursday 18th May 2023

Being Safe: Consent

Thursday 15th June 2023

Online, Social Media and Pornography

As these sessions will be running across six days across the academic year please find details of how day 1 has been planned:

Period 1: To recognise key things about myself and relationships I have, romantic relationships I know about - family members.

Period 2: To define what a family is and to explain what a family can look like.

Period 3: To evaluate what a healthy relationship can look and feel like.

Period 4: To understand marriage and the law.

Period 5: To be able to problem solve issues in relationships.

Please click [here](#) to find out more about the RSE topics that we will be covering and why RSE is so important. Please complete [this form](#) and return to hanan.rehane@smmathecourtyard.org confirming the consent for your child to take part in RSE.

The Courtyard aims to offer an outstanding educational and social provision that will equip our students with the skills and experiences needed to discover and live out their potential.



St Mary Magdalene Academy
The Courtyard

THE COURTYARD COMMUNITY



Lisa Taft, a mum of two young people with Autism wanted to let you know about a service she provides which may be of help to some of our students.

Lisa runs a Minecraft Server for the neurodiverse, called Famallama. Originally this was set up for her children but it's growing into something bigger at the moment. It is a safe online space, including a Minecraft server, discord chat server and a website with forums, all protected and whitelisted so only those that apply can have access and is completely free of charge.

It is closely monitored day and night, they have parents and young autistic moderators from both UK and USA so that there is always someone around should a player need help. They have plugins and mods on the server that have been specially designed for anyone with neurodiversity, such as a chat plugin where players can change the colour and divide the chat up, this is especially helpful for those with learning difficulties and dyslexia. Plus, two experienced computer science graduates who are very good at creating and designing stuff especially for our community.

Famallama provides everything that a lot of big servers provide but in a more protective way so that players don't become overwhelmed. So if a player dies, such as if a creeper explodes in front of them, they do not lose their inventory. Famallama can also protect their builds so that they can't be broken. On top of that they have things like calming rooms, so if a player becomes overwhelmed, they can take time out of the game until they feel better.

It's also nice for players to play along with likeminded people, with people that understand what they have to cope with from day to day and it's been a pleasure watching those friendships flourish. Recently Famallama hosted an event in Liverpool for players and families, it was an incredible day and a very heart-warming day. It gave our members the chance to see that the friends they made on the server are real people and cemented their friendships.

Next month they have been invited to Minevention, which is a convention for minecrafters based in Dublin. They will be showcasing the server there and taking part in activities along with some youtubers. Lisa wanted to open this up to anyone who feels would benefit from this.

FAMALLAMA
A MINECRAFT SERVER & ONLINE SPACE FOR THE NEURODIVERSE.

I SET UP FAMALLAMA AFTER MY SON WAS BULLIED ON OTHER LARGE MINECRAFT SERVERS. HE IS AUTISTIC AND JUST WANTED TO MAKE FRIENDS. I WANTED TO CREATE A SAFE, CALM ENVIRONMENT FOR HIM, WHICH I BELIEVE I HAVE NOW DONE.

NOW WITH HIS HELP WE HAVE A LOVELY COMMUNITY CONSISTING OF CHILDREN AND FAMILIES FROM ALL OVER THE WORLD WITH VARYING DEGREES OF AUTISM, ADHD AND SEN.

OUR SERVER IS WHITELISTED SO YOU HAVE TO APPLY TO JOIN. THIS MAKES IT SAFER SO THAT ONLY PEOPLE ON THE WHITELIST CAN GET PAST OUR SECURITY. WE HAVE MANY PROGRAMS AND TWEAKS IN PLACE TO MAKE THE GAME MORE ACCESSIBLE, ESPECIALLY TO THOSE WHO STRUGGLE WITH TYPING AND VISION PROBLEMS.

WE HAVE PLUGINS TO MAKE THE GAME EASIER TO COPE WITH, SO IF A PLAYER SHOULD DIE, THEY KEEP THEIR ITEMS. THEY CAN CHOOSE GAME MODE LEVELS THEY WISH TO PLAY FROM PEACEFUL THROUGH TO ADVENTURE MODE, THEY JUST NEED TO PICK A WORLD.

THE SERVER IS MODERATED BY PARENTS AND YOUNG AUTISTIC ADULTS. WE HAVE ADMINS FROM THE UK, EUROPE AND USA SO THERE WILL ALWAYS BE SOMEONE WATCHING CONSOLE MAKING SURE THE PLAYERS ARE OK.

BUILDS ARE PROTECTED THROUGH A PROTECTION SYSTEM WE HAVE AND WE ALSO HOST ANNUAL IN REAL LIFE EVENTS TOO, SO THAT OUR PLAYERS CAN SEE THE FRIENDS THEY MAKE ONLINE ARE REAL. IF YOU WOULD LIKE TO KNOW MORE PLEASE CONTACT ME BELOW ON ANY OF THE BELOW PLATFORMS. LISA :)

Facebook: Famallama Minecraft Server
Twitter: @Famallamas
Instagram: famallama_minecraft_server
Website: www.famallama.co.uk
Email: SparkleTwinnie@gmail.com
Direct Application Form:
<https://form.jotform.com/203114707370042>

The Courtyard aims to offer an outstanding educational and social provision that will equip our students with the skills and experiences needed to discover and live out their potential.



St Mary Magdalene Academy
The Courtyard

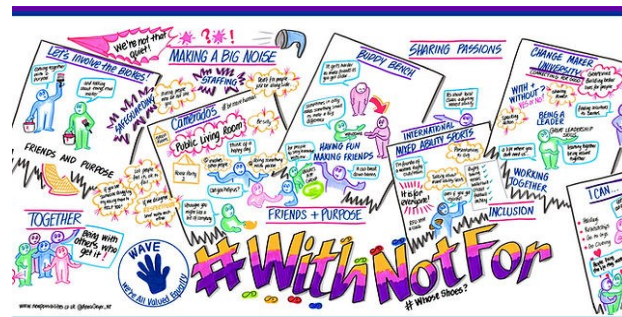
THE COURTYARD COMMUNITY



The Hayward is an adventure playground designed mainly for children and young people from 5 to 19 years old. It provides a secure and stimulating environment where young people have

access to a wide variety of structured and unstructured activities. It also provides a youth club for young people aged 15 to 19 years on Wednesday evenings from 6.30pm to 8.30pm. Young people are actively supported by qualified and experienced staff who support them in these play activities. There are a range of activities designed to engage interest and entertain young people age 15 upwards. The outside space is vast, offering a range of different areas for children and young people to explore. This includes grassed and wooded areas, a range of accessible interconnecting wooden structures, climbing walls, sports and games pitch as well as a water play area. The building includes a main hall as well as a sensory room, kitchen, office and toilets.

If you are interested in getting your child signed up for extracurricular activities or to the youth club you can contact The Hayward Adventure Playground directly on 02076070033.



WAVE for Change is about encouraging and enabling mixed-ability friendships.

We want to see more people with and without learning disabilities mixing and having fun together in the heart of our communities.

Our focus is on enabling places across the UK where this can happen. We connect, encourage and support those who want to see vibrant mixed-ability social and worship groups in their communities.

WITH NOT FOR: The WAVE approach is that everyone should have the chance to join in with community life and be valued equally. We avoid terms like 'service users' or 'volunteers'. For us it's all about doing things with and not for each other.

When we do this, everyone benefits

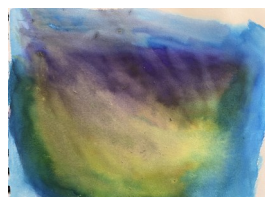
- Understanding and acceptance of people's 'differences' improves
- Confidence grows
- Anxiety reduces
- Friendships are built

Find a group near you by contacting Wave For Change on hello@waveforchange.org.uk.

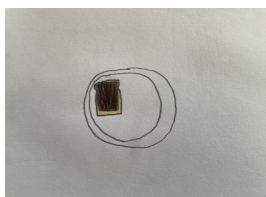


The Invisible People is a new public art trail that started off in Stoke Newington (Hackney) in July. The Invisible People Art Trail launched to showcase artwork by people who feel invisible, marginalized, who are disabled or have a learning disability.

One of our students, Lula took part in this workshop over the summer break and managed to get not 1 but all 3 of her amazing art pieces showcased in shop and restaurant windows in a celebration of difference and talent.



JUMP IN MY PUDDLE



Life Is Better With Chocolate Toast.



A Sad Life (Don't Take Off The Mask)

SUMMER TERM FORTNIGHTLY SUBJECT FOCUS

Week Beginning	Monday 3rd October	Monday 10th October
Maths Entry Level	4 operations	4 operations
Maths FSL1	Ratio and proportion	Fractions
Maths GCSE	Algebra - expressions and substitution	Algebra - equations and inequalities
English Entry Level	Grouping Data	Understanding independent and dependent
English FSL1	Analysing text and PEA paragraphs	Creating a dystopian story arc
English GCSE Lang Group 1	Analysing 19th Century Extracts	Creating an original gothic short story
English GCSE Lit Group 1	Poetry Anthology - Conflict	Poetry Anthology - Conflict
English GCSE Lit Group 2	Creating a non-fiction text	Using Key Terms to deconstruct texts- non-fiction
ICT Informatics	2 x coding tasks	2 x coding tasks
ICT FSL1 & 2	Finding and selecting information. -find and select reliable information appropriate for purpose and audience	Finding and selecting information
ICT BCS/ICDL L3 PPT	Understand how audience demographic (age, educational level, occupation, cultural background) and knowledge of subject impacts on planning of a presentation.	Understand how audience demographic (age, educational level, occupation, cultural background) and knowledge of subject impacts on planning of a presentation.
Entry1-3	Finding and selecting information appropriate for the audience.	Developing, presenting and communication information E-Safety Flyer
Science Entry Level	Weight & Mass	Stopping distances
Science BTEC	Describe nuclear fission	Describe half-life in terms of radioactive de-
French	The French alphabet and how to say French vowels and French sounds oi ou on ch	Assessment on all covered so far and introduction to BHM (Black history month) from a French perspective
Home Cooking	To identify healthy eating	Practical lesson - vegetable pasta bake
Hospitality	To identify working skills needed to work effectively in the industry	Practical lesson - vegetable pasta bake
PSD	To identify aspects of myself and my life that make me feel good about myself	To describe the difference between helpful and kind words vs unhelpful and unkind
WorkSkills BTEC	Work related behaviours	Work related qualities
P.E.	Developing team work and positioning	Develop foot positioning and power control
Performing arts	Exploring movement and creating characters	Exploring voice and creating characters
World Studies	Industrial revolution 2: The factory and mass production	Industrial revolution 3: The automobile and the suburbs
Art	<ul style="list-style-type: none"> - BTEC unit 1: Cafe mood board/Intro to line drawing - BTEC unit 6: Contemporary art about identity - BTEC unit 3: Intro to practitioner who has used techniques for signs - AQA: Using tone in a line drawing and background. Using colour to show tone in still life 	<ul style="list-style-type: none"> - BTEC unit 1: Tone intro.line + tone wall art - BTEC unit 6: Comparing Pop art to contemporary art - BTEC unit 3: Painting signs on wooden boards - AQA: Creating full Still life using line, background and tone
Independence Group 1	Introduction into each unit: social communication, puberty and relationships, Knowing of self, safety in the community, Healthy diet	Introduction into each unit: social communication, puberty and relationships, Knowing of self, safety in the community, Healthy diet
Independence Group 2	Introduction into each unit: social communication, puberty and relationships, Knowing of self, safety in the community, Healthy diet	Introduction into each unit: social communication, puberty and relationships, Knowing of self, safety in the community, Healthy diet

The Courtyard aims to offer an outstanding educational and social provision that will equip our students with the skills and experiences needed to discover and live out their potential.



St Mary Magdalene Academy
The Courtyard

COURTYARD CELEBRATIONS



KS4 Star of the week

James for fantastic social communication in Key-worker and hard work and determination in English

Khaleel, Jack N, Daniel K, Sam, Alfredo for their brilliant answers on how to keep safe when online

Bobby for his hard work and tenacity in Maths

Elliott for explaining all of the creative writing techniques clearly to the class

KS4 Star of the week

Harry for improving his focus and concentration in World Studies

Maddy for working incredibly hard at home on her Maths

Martin for rewriting his PSD script to align with a 'healthy friendship'

Fawaz for settling in and contributing his insight during group discussion in World Studies

KS4 Star of the week

Eden for her great work and presentation, which included generating a stunning bar graph of her dietary intake, in home cooking

Naomi for her diligence and tenacity in her Maths classes.

Bobby and Jesiah for fantastic singing in French!

**Students with the most
Dojos:**

NAOMI



**Keyworker with the
most dojos:**

Ms Coburn

The Courtyard aims to offer an outstanding educational and social provision that will equip our students with the skills and experiences needed to discover and live out their potential.



St Mary Magdalene Academy
The Courtyard

COURTYARD CELEBRATIONS



KS5 Star of the week

Dev for fantastic focus and teamwork in Maths lessons

Ruby for fantastic focus and teamwork in Maths lessons

Tyrese for great character and hot-seating in Drama

KS5 Star of the week

Angelina for her sheer determination at the gym

Elshady for developing his skills in football tennis

Aymene for working hard in Science

KS5 Star of the week

Keira for fantastic singing in French

Liz for showing excellency in French

KS5 Student with the most Dojo points:

KEIRA

